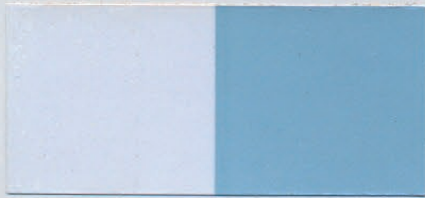


## Silver-White Pigments

### Iriodin® (9)111

Rutile Fine Satin  
Interior: PSD <15 µm  
Exterior: PSD <15 µm  
Rutile



### Iriodin® 120

Luster Satin  
Interior: PSD 5–25 µm  
Exterior: Type n.a.  
Anatase



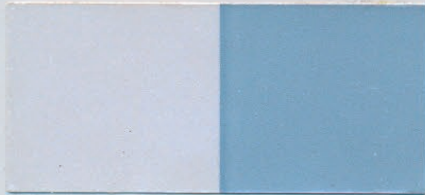
### Iriodin® (9)121

Rutile Lustre Satin  
Interior: PSD 5–25 µm  
Exterior: PSD 5–25 µm  
Rutile



### Iriodin® (9)119

Polar White  
Interior: PSD 5–25 µm  
Exterior: PSD 5–25 µm  
Rutile



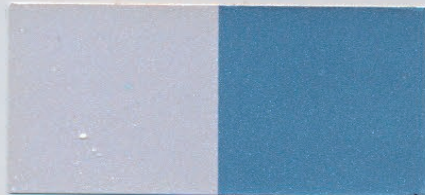
### Iriodin® 100

Silver Pearl  
Interior: PSD 10–60 µm  
Exterior: Type n.a.  
Anatase



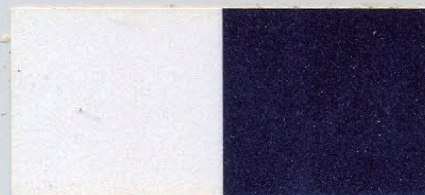
### Iriodin® (9)103

Rutile Sterling Silver  
Interior: PSD 10–60 µm  
Exterior: PSD 5–40 µm  
Rutile



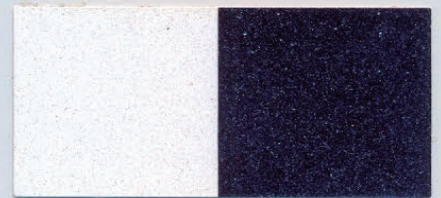
### Iriodin® (9)153

Flash Pearl  
Interior: PSD 20–100 µm  
Exterior: PSD 20–100 µm  
Rutile



### Iriodin® (9)163

Shimmer Pearl  
Interior: PSD 20–180 µm  
Exterior: PSD 20–180 µm  
Rutile



## Synthetic Mica

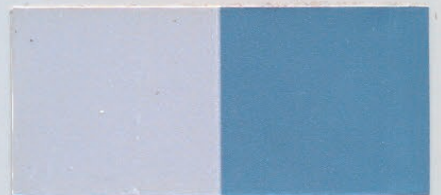
### Iriodin® 6123

Icy White Satin  
Interior: PSD 5–25 µm  
Exterior: Type n.a.  
Rutile



### Iriodin® 6103

Icy White  
Interior: PSD 5–40 µm  
Exterior: Type n.a.  
Rutile



**NEW**

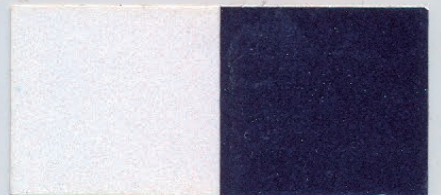
### Iriodin® (9)6107

Icy White Lightning  
Interior: PSD 5–40 µm  
Exterior: PSD 5–40 µm  
Rutile



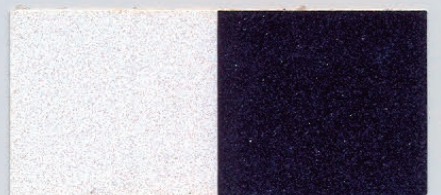
### Iriodin® 6153

Icy White Flash  
Interior: PSD 20–100 µm  
Exterior: Type n.a.  
Rutile



### Iriodin® 6163

Icy White Shimmer  
Interior: PSD 20–180 µm  
Exterior: Type n.a.  
Rutile



(9) XXX is the nomenclature format for exterior (surface treated) grades. Please contact our local office for detailed information about available types of surface treatments. In general we recommend exterior grades for exterior use.

Type n.a. = Type not available

(9) XXX is the nomenclature format for exterior (surface treated) grades. Please contact our local office for detailed information about available types of surface treatments. In general we recommend exterior grades for exterior use.

Type n.a. = Type not available

## Interference Pigments

**Iriodin® (9)201**

Rutile Fine Gold  
Interior: PSD 5–25 µm  
Exterior: PSD 5–25 µm  
Rutile



**Iriodin® (9)205**

Rutile Platinum Gold  
Interior: PSD 10–60 µm  
Exterior: PSD 5–40 µm  
Rutile



**Iriodin® (9)211**

Rutile Fine Red  
Interior: PSD 5–25 µm  
Exterior: PSD 5–25 µm  
Rutile



**Iriodin® (9)215**

Rutile Red Pearl  
Interior: PSD 10–60 µm  
Exterior: PSD 5–40 µm  
Rutile



**Iriodin® (9)217**

Rutile Copper Pearl  
Interior: PSD 10–60 µm  
Exterior: PSD 5–40 µm  
Rutile



**Iriodin® (9)223**

Rutile Fine Lilac  
Interior: PSD 5–25 µm  
Exterior: PSD 5–25 µm  
Rutile



**Iriodin® (9)219**

Rutile Lilac Pearl  
Interior: PSD 10–60 µm  
Exterior: PSD 5–40 µm  
Rutile



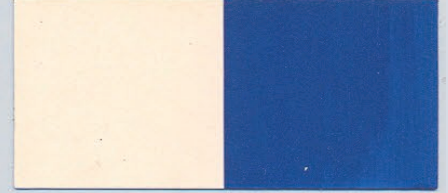
**Iriodin® (9)221**

Rutile Fine Blue  
Interior: PSD 5–25 µm  
Exterior: PSD 5–25 µm  
Rutile



**Iriodin® (9)225**

Rutile Blue Pearl  
Interior: PSD 10–60 µm  
Exterior: PSD 5–40 µm  
Rutile



**Iriodin® (9)231**

Rutile Fine Green  
Interior: PSD 5–25 µm  
Exterior: PSD 5–25 µm  
Rutile



**Iriodin® (9)235**

Rutile Green Pearl  
Interior: PSD 10–60 µm  
Exterior: PSD 5–40 µm  
Rutile



(9) XXX is the nomenclature format for exterior (surface treated) grades. Please contact our local office for detailed information about available types of surface treatments. In general we recommend exterior grades for exterior use.

(9) XXX is the nomenclature format for exterior (surface treated) grades. Please contact our local office for detailed information about available types of surface treatments. In general we recommend exterior grades for exterior use.

## Gold Pigments

**Iriodin® (9)323**

Royal Gold Satin  
Interior: PSD 5–25 µm  
Exterior: PSD 5–25 µm



**Iriodin® (9)303**

Royal Gold  
Interior: PSD 10–60 µm  
Exterior: PSD 5–40 µm



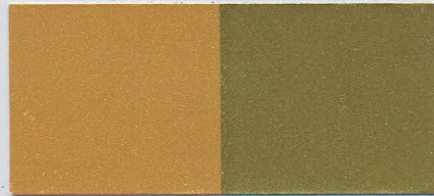
**Iriodin® (9)327**

Fine Star Gold  
Interior: PSD 5–25 µm  
Exterior: PSD 5–25 µm



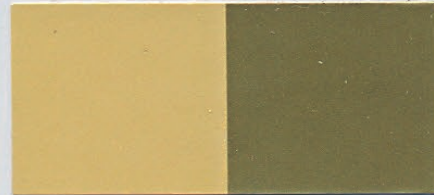
**Iriodin® (9)307**

Star Gold  
Interior: PSD 10–60 µm  
Exterior: PSD 5–40 µm



**Iriodin® (9)300**

Gold Pearl  
Interior: PSD 10–60 µm  
Exterior: PSD 5–40 µm



**Iriodin® 355**

Glitter Gold  
Interior: PSD 10–100 µm  
Exterior: Type n.a.



## Green Pigments

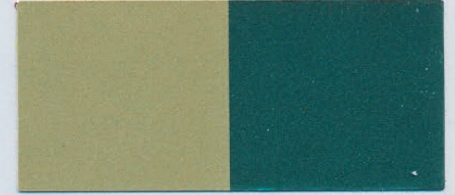
**Iriodin® 9440**

Colibri Blue-Green  
Interior: Type n.a.  
Exterior: PSD 5–40 µm



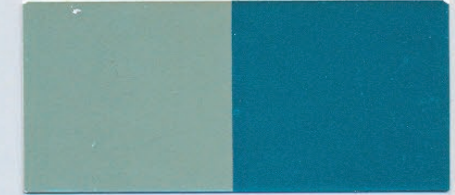
**Iriodin® 9444**

Moss Green  
Interior: Type n.a.  
Exterior: PSD 5–40 µm



**Iriodin® GP Blue-Green**

Interior: Type n.a.  
Exterior: PSD 5–40 µm



**Iriodin® GP Green**

Interior: Type n.a.  
Exterior: PSD 5–40 µm



**Iriodin® GP Blue**

Interior: Type n.a.  
Exterior: PSD 5–40 µm



**Iriodin® GP Red**

Interior: Type n.a.  
Exterior: PSD 5–40 µm



(9) XXX is the nomenclature format for exterior (surface treated) grades. Please contact our local office for detailed information about available types of surface treatments. In general we recommend exterior grades for exterior use.

Type n.a. = Type not available

(9) XXX is the nomenclature format for exterior (surface treated) grades. Please contact our local office for detailed information about available types of surface treatments. In general we recommend exterior grades for exterior use.

Type n.a. = Type not available

## Earth Tone Pigments

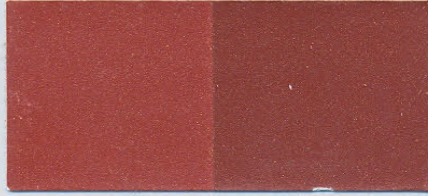
### Iriodin® (9)520

Bronze Satin  
Interior: PSD 5–25 µm  
Exterior: PSD 5–25 µm



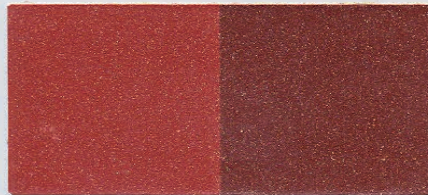
### Iriodin® (9)500

Bronze  
Interior: PSD 10–60 µm  
Exterior: PSD 5–40 µm



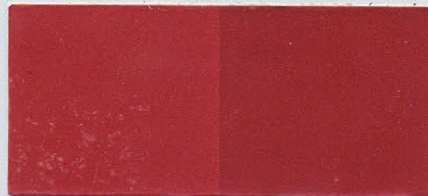
### Iriodin® 530

Glitter Bronze  
Interior: PSD 10–125 µm  
Exterior: Type n.a.



### Iriodin® (9)522

Red-Brown Satin  
Interior: PSD 5–25 µm  
Exterior: PSD 5–25 µm



### Iriodin® (9)502

Red-Brown  
Interior: PSD 10–60 µm  
Exterior: PSD 5–40 µm



### Iriodin® (9)524

Red Satin  
Interior: PSD 5–25 µm  
Exterior: PSD 5–25 µm



### Iriodin® (9)504

Red  
Interior: PSD 10–60 µm  
Exterior: PSD 5–40 µm



### Iriodin® 9525

Red-Violet Satin  
Interior: Type n.a.  
Exterior: PSD 5–25 µm



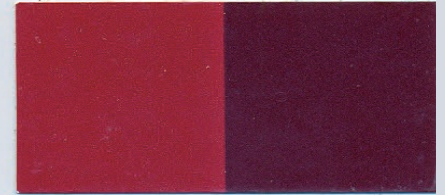
### Iriodin® 9505

Red-Violet  
Interior: Type n.a.  
Exterior: PSD 5–40 µm



### Iriodin® 9507

Scarab Red  
Interior: Type n.a.  
Exterior: PSD 5–40 µm



(9) XXX is the nomenclature format for exterior (surface treated) grades. Please contact our local office for detailed information about available types of surface treatments. In general we recommend exterior grades for exterior use.

Type n.a. = Type not available

(9) XXX is the nomenclature format for exterior (surface treated) grades. Please contact our local office for detailed information about available types of surface treatments. In general we recommend exterior grades for exterior use.

Type n.a. = Type not available

Silver-Grey/Silver-Blue/  
Satin-Black Pigments

**Iriodin® 9612**

Silver-Grey Fine Satin  
Interior: Type n.a.  
Exterior: PSD <15 µm  
Rutile



**Iriodin® 9602**

Silver-Grey  
Interior: Type n.a.  
Exterior: PSD 5-40 µm  
Rutile



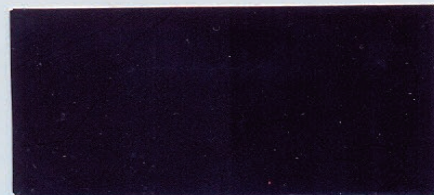
**Iriodin® 9605**

Blue-Shade Silver  
Interior: Type n.a.  
Exterior: PSD 5-40 µm  
Rutile



**Iriodin® 600**

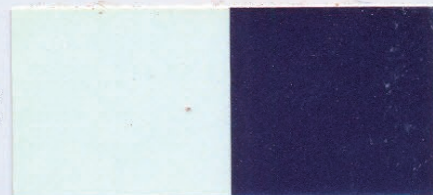
Black Mica  
Interior: PSD 10-60 µm  
Exterior: Type n.a.



**Colorstream®**

**T10-01 or T20-01**

Viola Fantasy  
Interior (T10-01): PSD 5-50 µm  
Exterior (T20-01): PSD 5-40 µm  
Rutile



**Colorstream®**

**T10-02 or T20-02**

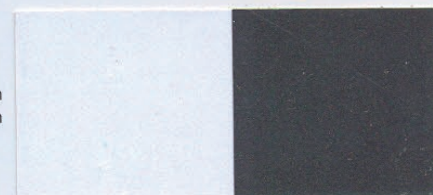
Arctic Fire  
Interior (T10-02): PSD 5-50 µm  
Exterior (T20-02): PSD 5-40 µm  
Rutile



**Colorstream®**

**T10-03 or T20-03**

Tropic Sunrise  
Interior (T10-03): PSD 5-50 µm  
Exterior (T20-03): PSD 5-40 µm  
Rutile



**Colorstream®**

**T10-04 or T20-04**

Lapis Sunlight  
Interior (T10-04): PSD 5-50 µm  
Exterior (T20-04): PSD 5-40 µm  
Rutile

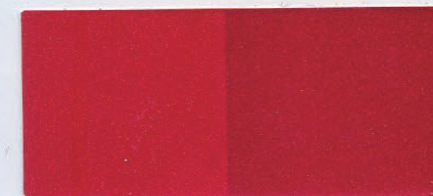


**NEW**

**Colorstream®**

**F20-51**

Lava Red  
Interior: Type n.a.  
Exterior: PSD 5-40 µm



**Xiralllic® T61-10**

Micro Silver  
Interior: Type n.a.  
Exterior: PSD ≤20 μm  
Rutile



**Xiralllic® T50-10 or T60-10**

Crystal Silver  
Interior (T50-10): PSD 5-30 μm  
Exterior (T60-10): PSD 5-30 μm  
Rutile



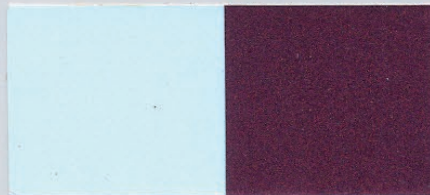
**Xiralllic® T60-20**

Sunbeam Gold  
Interior: Type n.a.  
Exterior: PSD 5-30 μm  
Rutile



**Xiralllic® T60-21**

Solaris Red  
Interior: Type n.a.  
Exterior: PSD 5-30 μm  
Rutile



**Xiralllic® T60-22**

Amethyst Dream  
Interior: Type n.a.  
Exterior: PSD 5-30 μm  
Rutile



**Xiralllic® T60-23**

Galaxy Blue  
Interior: Type n.a.  
Exterior: PSD 5-30 μm  
Rutile



**Xiralllic® T60-25**

Cosmic Turquoise  
Interior: Type n.a.  
Exterior: PSD 5-30 μm  
Rutile



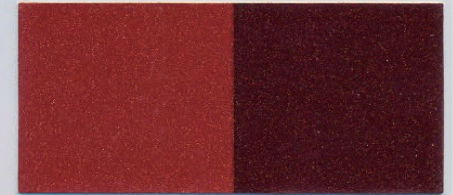
**Xiralllic® T60-24**

Stellar Green  
Interior: Type n.a.  
Exterior: PSD 5-30 μm  
Rutile



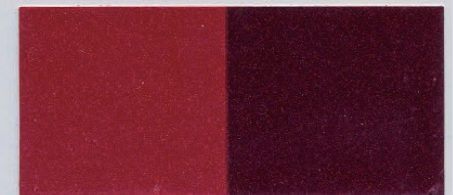
**Xiralllic® F60-50**

Fireside Copper  
Interior: Type n.a.  
Exterior: PSD 5-30 μm



**Xiralllic® F60-51**

Radiant Red  
Interior: Type n.a.  
Exterior: PSD 5-30 μm



**Xirallic**<sup>®</sup> **NXT**

**NEW**

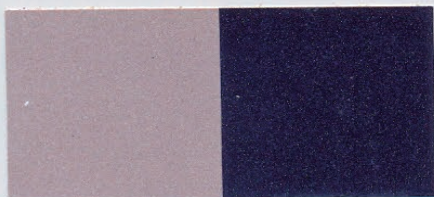
**Xirallic**<sup>®</sup> NXT M260-60

Panthera Silver

Interior: Type n.a.

Exterior: PSD 5-30 µm

Rutile



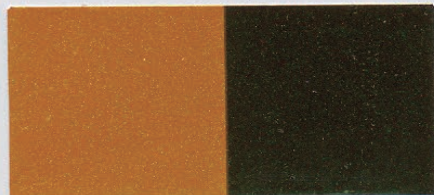
**NEW**

**Xirallic**<sup>®</sup> NXT M260-30

Leonis Gold

Interior: Type n.a.

Exterior: PSD 5-30 µm



**Meoxal**<sup>®</sup> F120-58

Wahiba Orange

Interior: Type n.a.

Exterior: PSD 5-30 µm



**Meoxal**<sup>®</sup> F120-30

Taklamakan Gold

Interior: Type n.a.

Exterior: PSD 5-30 µm



**NEW**

**Meoxal**<sup>®</sup> F121-51

Atacama Red

Interior: Type n.a.

Exterior: PSD 5-25 µm



**Pyrisma<sup>®</sup> T30-20 or T40-20**

Color Space Yellow  
Interior (T30-20):  
PSD 5-35 μm  
Exterior (T40-20):  
PSD 5-35 μm  
Rutile



**Pyrisma<sup>®</sup> T30-21 or T40-21**

Color Space Red  
Interior (T30-21):  
PSD 5-35 μm  
Exterior (T40-21):  
PSD 5-35 μm  
Rutile



**Pyrisma<sup>®</sup> T30-26 or T40-26**

Color Space Magenta  
Interior (T30-26):  
PSD 5-35 μm  
Exterior (T40-26):  
PSD 5-35 μm  
Rutile



**Pyrisma<sup>®</sup> T30-22 or T40-22**

Color Space Violet  
Interior (T30-22):  
PSD 5-35 μm  
Exterior (T40-22):  
PSD 5-35 μm  
Rutile



**Pyrisma<sup>®</sup> T30-27 or T40-27**

Color Space Indigo  
Interior (T30-27):  
PSD 5-35 μm  
Exterior (T40-27):  
PSD 5-35 μm  
Rutile



**Pyrisma<sup>®</sup> T81-23**

Liquid Blue  
Interior: Type n.a.  
Exterior: PSD ≤15 μm  
Rutile



**Pyrisma<sup>®</sup> T30-23 or T40-23**

Color Space Blue  
Interior (T30-23):  
PSD 5-35 μm  
Exterior (T40-23):  
PSD 5-35 μm  
Rutile



**Pyrisma<sup>®</sup> T30-25 or T40-25**

Color Space Turquoise  
Interior (T30-25):  
PSD 5-35 μm  
Exterior (T40-25):  
PSD 5-35 μm  
Rutile



**Pyrisma<sup>®</sup> T30-24 or T40-24**

Color Space Green  
Interior (T30-24):  
PSD 5-35 μm  
Exterior (T40-24):  
PSD 5-35 μm  
Rutile



**Pyrisma<sup>®</sup> M40-58**

Ambercup Orange  
Interior: Type n.a.  
Exterior: PSD 5-35 μm



**Pyrisma<sup>®</sup> F80-51**

Ferric Red  
Interior: Type n.a.  
Exterior: PSD 5-35 μm



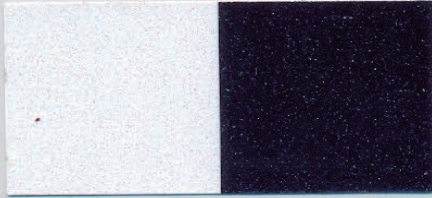
**Miraval® (9)5311**

Scenic White  
Interior: PSD 10–100 µm  
Exterior: PSD 10–100 µm  
Rutile



**Miraval® 5411**

Magic White  
Interior: PSD 20–200 µm  
Exterior: Type n.a.  
Rutile



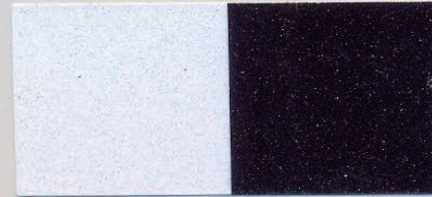
**Miraval® 5320**

Scenic Gold  
Interior: PSD 10–100 µm  
Exterior: Type n.a.  
Rutile



**Miraval® 5420**

Magic Gold  
Interior: PSD 20–200 µm  
Exterior: Type n.a.  
Rutile



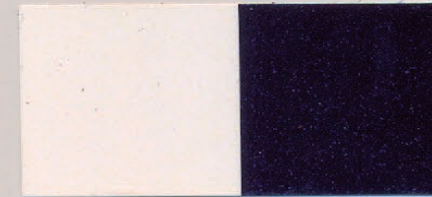
**Miraval® 5422**

Magic Red  
Interior: PSD 20–200 µm  
Exterior: Type n.a.  
Rutile



**Miraval® 5424**

Magic Blue  
Interior: PSD 20–200 µm  
Exterior: Type n.a.  
Rutile



**Biflair® 84**

Interior: PSD < 25 µm  
Exterior: Type n.a.



**Biflair®** pigment dispersions contain semi-transparent BiOCl crystals, which are offered in different dispersions for a variety of binder systems.

Product Line	% Pigment	Vehicle	Particle Size
Biflair® 83	60.0	Acrylic / Water	< 25 µm
Biflair® 84	55.0	Acrylic / Iso-Propyl Acetate	< 25 µm
Biflair® L-200*	45.0	Nitrocellulose / Butyl Acetate	< 25 µm

\* Contains UV Absorbers

(9) XXX is the nomenclature format for exterior (surface treated) grades. Please contact our local office for detailed information about available types of surface treatments. In general we recommend exterior grades for exterior use.

Type n.a. = Type not available

Type n.a. = Type not available